

## WIRELESS CLIENT ADAPTER SETUP FOR CTS WIRELESS NETWORK CONNECTION

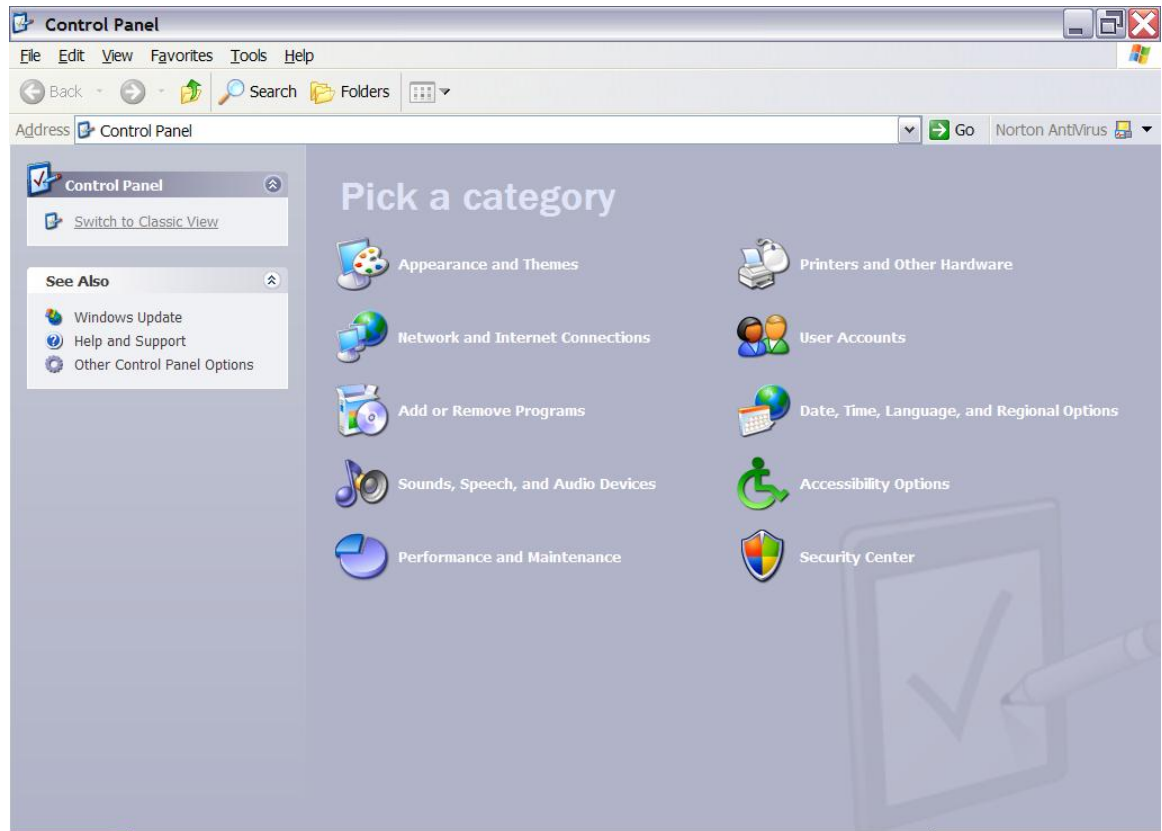
Note: These instructions apply to the Windows XP operating system with Service Pack 1 or later. If you do not have service pack 1, please go to the Microsoft Windows Updates website, <http://www.windowsupdates.com>, to obtain this and the latest service pack update.

After installing your "Wi-Fi Certified" wireless client adapter onto your computer according to the manufacturer's instructions, your computer will automatically detect the presence of the CTS wireless network when in the range of the wireless access point. It is not necessary for the system to detect the CTS wireless network prior to configuring the adapter but it is recommended.

### INSTRUCTIONS

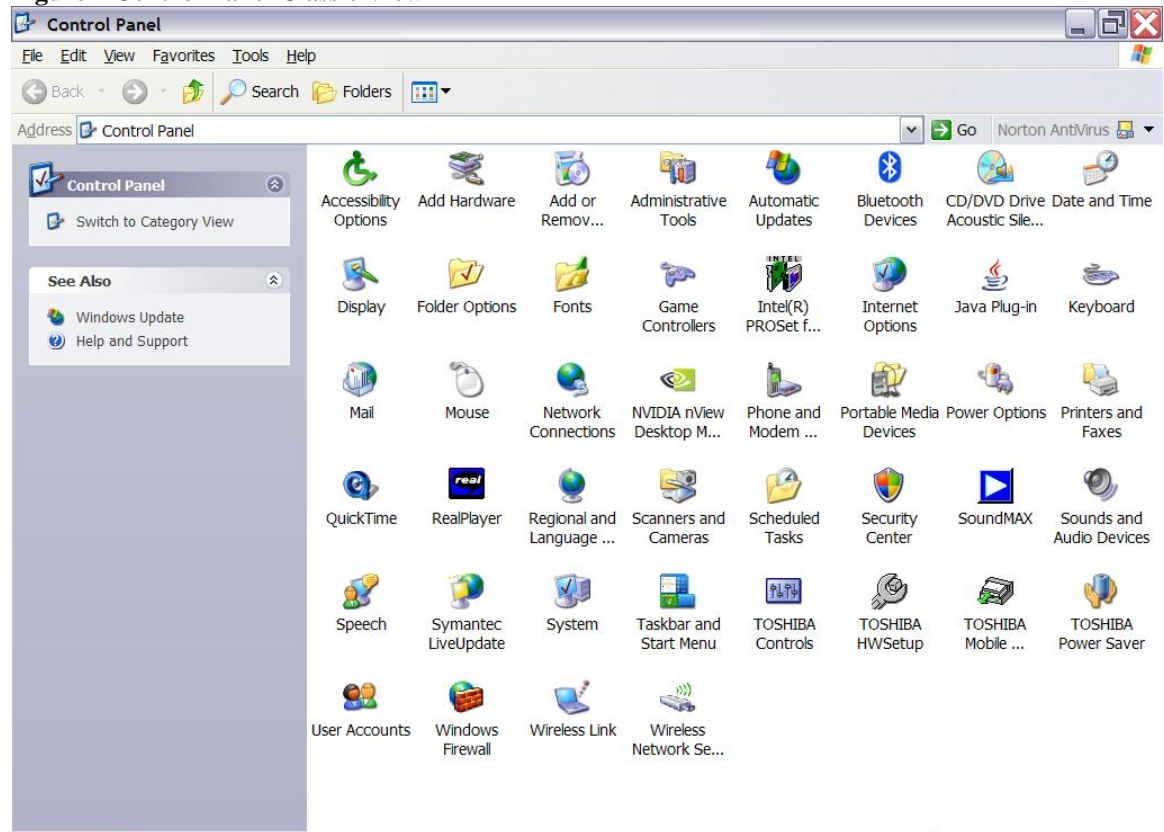
1. Click on the Start Menu button and select the Control Panel. Click the "Switch to Classic View" link, if available (see Figure 1).

**Figure 1 Control Panel Category View**



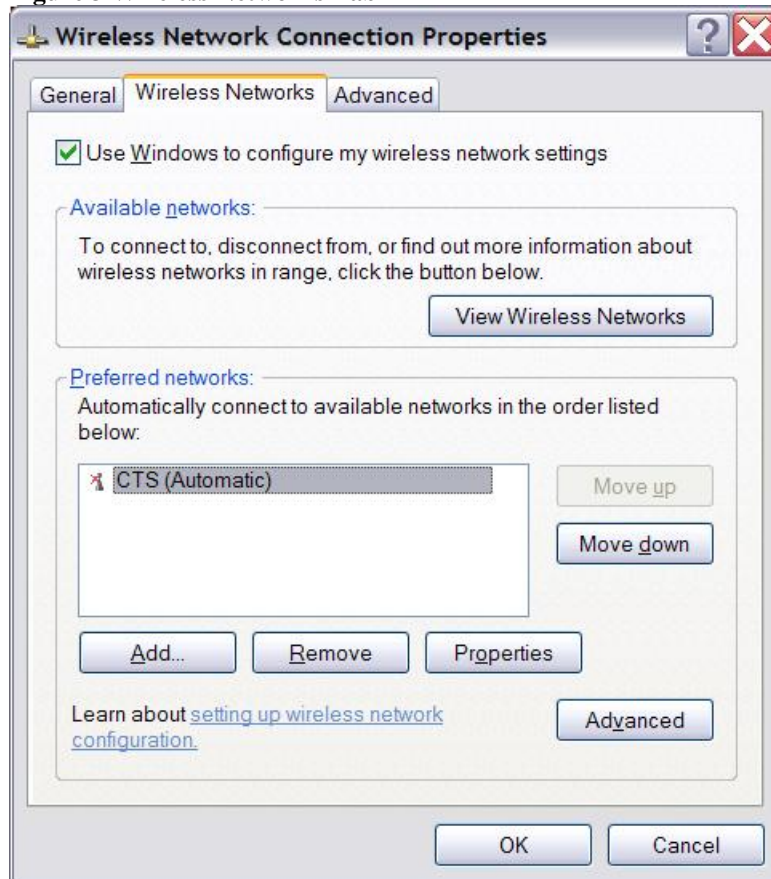
If "Switch to Category View" is shown, do not click the link (see Figure 2).

**Figure 2 Control Panel Classic View**



2. Double-Click on the Network Connections icon. Locate the Wireless Network Connection icon and right-click. Select "Properties" from the context-sensitive menu that appears.
3. You will see three tabs in the Wireless Network Connection Properties window. Select the Wireless Networks tab (see Figure 3).

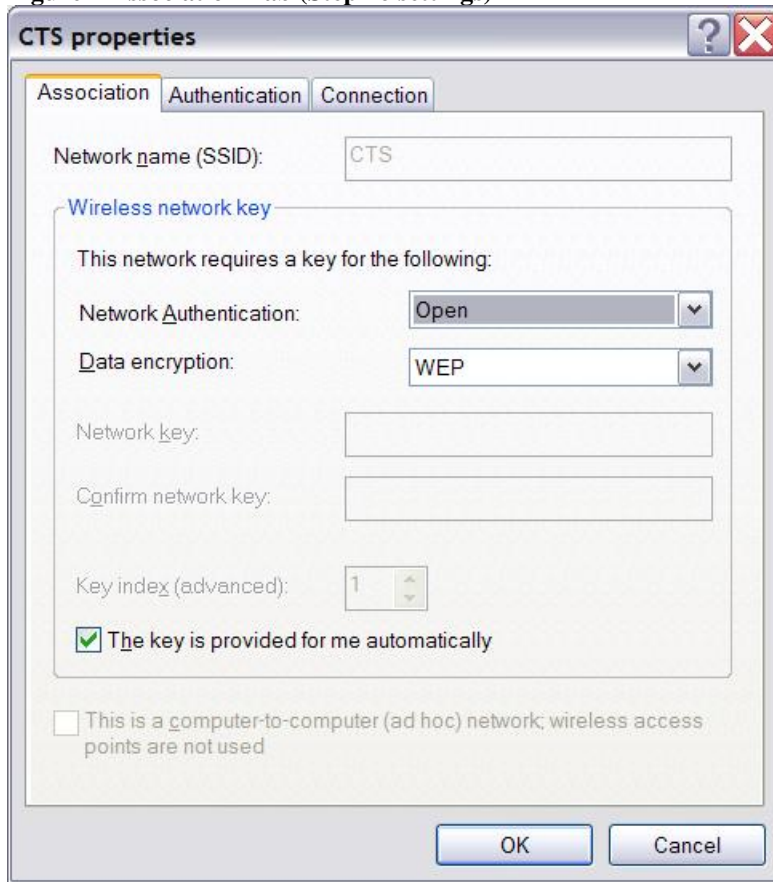
**Figure 3 Wireless Networks Tab**



Make sure the Use Windows to configure my wireless network settings is checked.

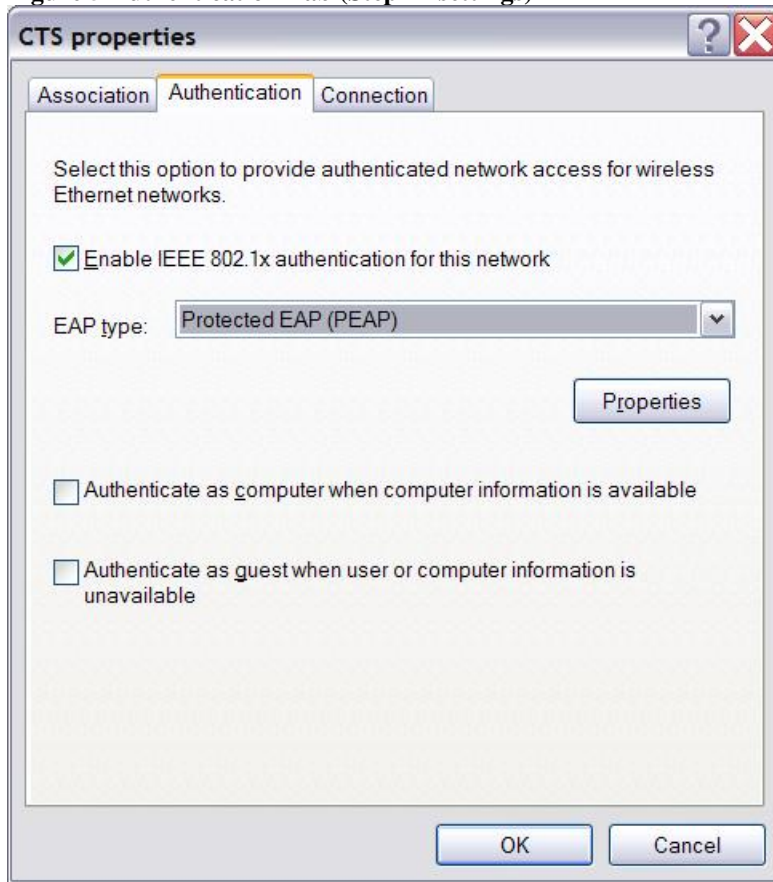
4. In the preferred networks list, you should see the CTS network listed (if the network was automatically detected). If it is listed, select it from list and click the Properties button. Skip to Step #6.
5. If the CTS network is not listed, click the Add button. In the Network name (SSID) field type "CTS" (without quotes).
6. In the Network Authentication field select "Open" from the drop-down menu. In the Data Encryption field, select "WEP" from the drop-down menu. Make sure that the "The key is provided for me automatically" checkbox is checked (see Figure 4).

**Figure 4 Association Tab (Step #6 settings)**



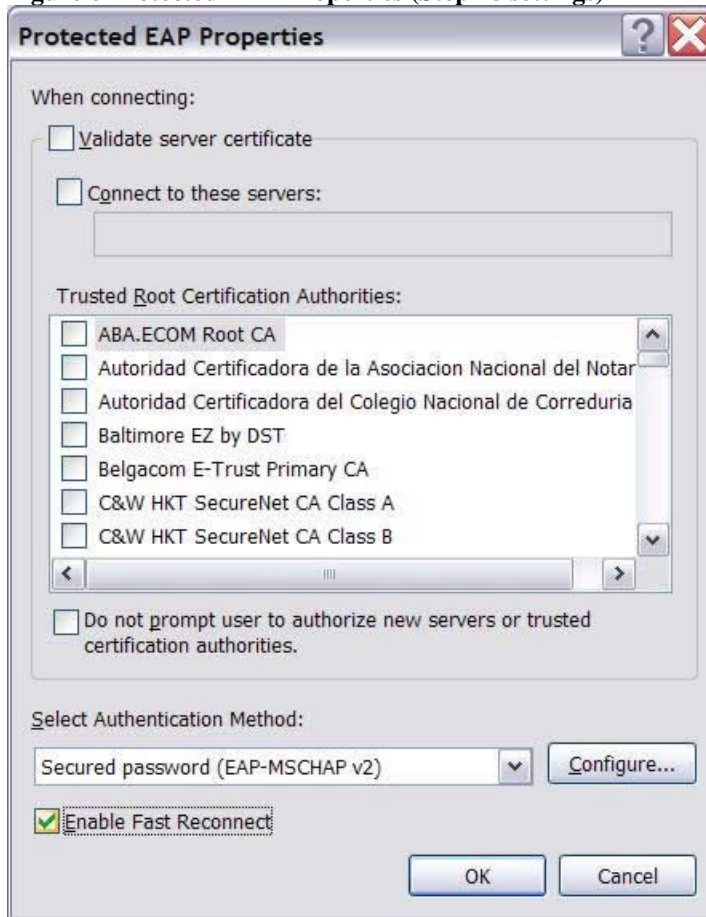
7. Select the Authentication tab. Make sure that the "Enable IEEE 802.1x authentication for this network" checkbox is checked. In the EAP type field, select Protected EAP (PEAP) from the drop-down menu. The Authenticate as computer when computer information is available and the Authenticate as guest when user or computer information is unavailable checkbox should not be checked (see Figure 5).

**Figure 5 Authentication Tab (Step #7 settings)**



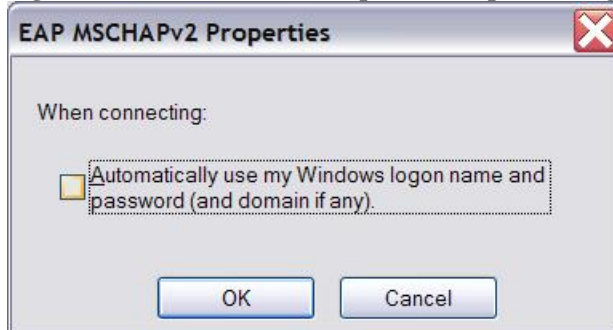
8. Click the Properties button. Uncheck the Validate server certificate checkbox. Make sure that "Secured password (EAP-MSCHAP v2)" is selected in the drop-down menu of the Select Authentication Method field. Check the Enable Fast Reconnect checkbox (see Figure 6).

**Figure 6 Protected EAP Properties (Step #8 settings)**



9. Click the Configure button. Unless you have registered your machine to login to the CTS domain and are currently logged in as a CTS domain user, uncheck the Automatically use my Windows logon name and password (and domain if any) checkbox (see Figure 7).

**Figure 7 EAP MSCHAPv2 Properties (Step #9 settings)**



10. Click OK to close the three windows and return back to the Wireless Network Connection Properties window. Make sure CTS is at the top of the preferred

networks list and click OK to close this window. Close the Network Connections Window.

11. When you are in the range of the wireless access point, your computer will automatically detect the CTS wireless network. You will be prompted to login to the network using your CTS domain account (see Figure 8). Type in your username, password and "CTS" for the domain. If you do not have a domain username and password, contact Computer Services.

